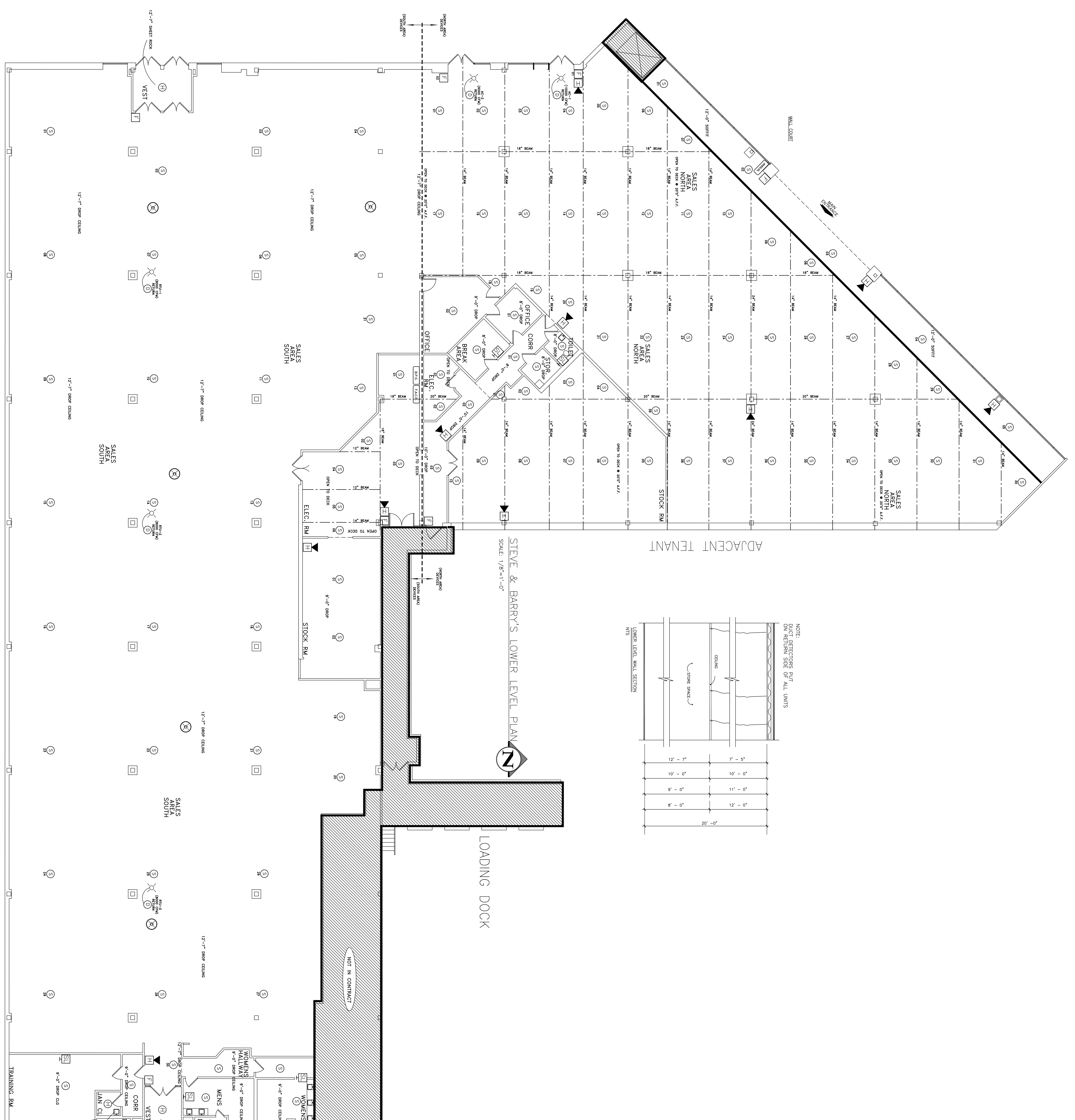
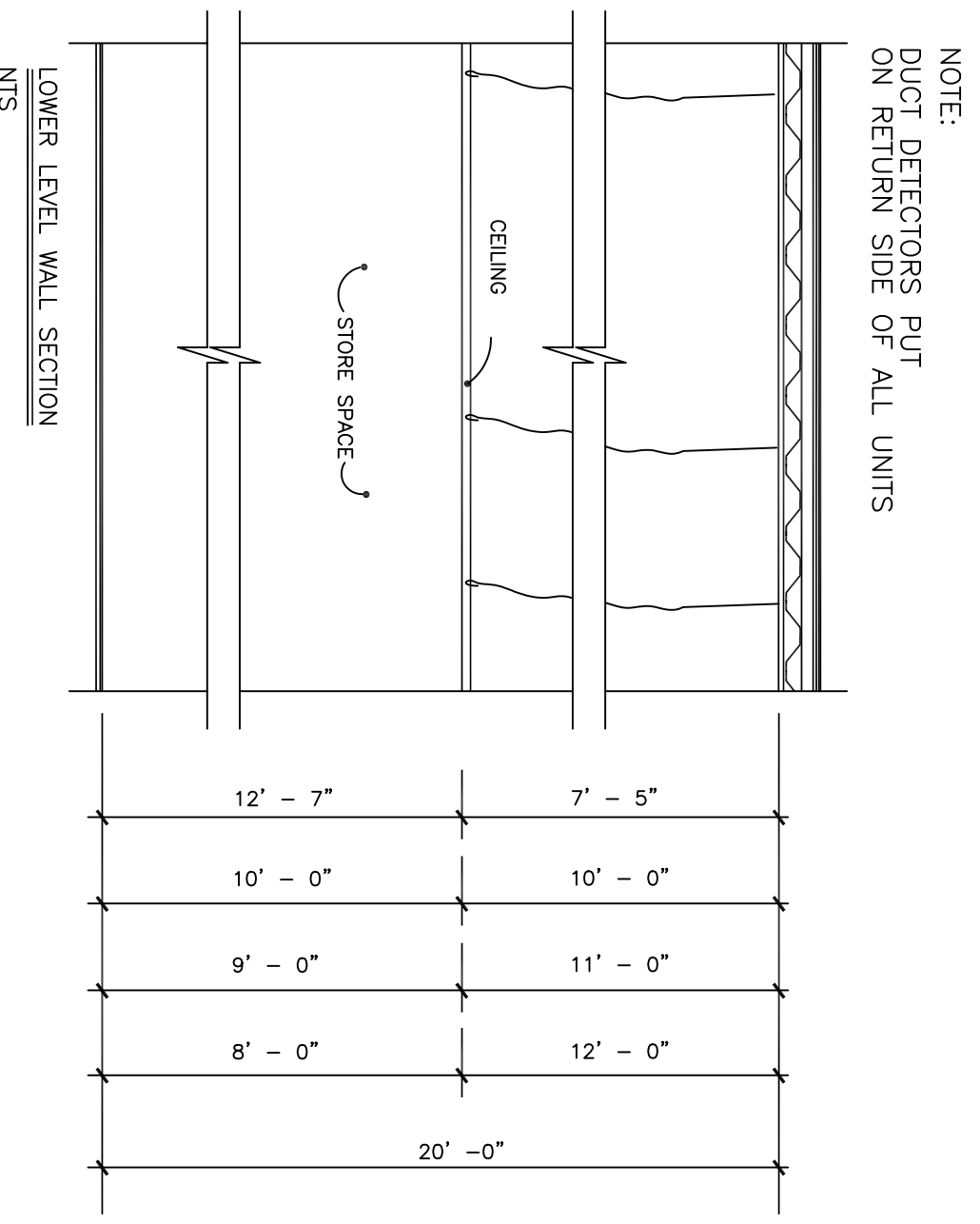


SYMBOL	DESCRIPTION	MODEL	QTY
⊙	Photoelectric Area Smoke Detector	EST SQA-PS 111	
⊕	Photoelectric Area Smoke Detector	EST SQA-PS 00	
⊠	Manual Pull Station Non-Coded with STI 6605 Guard	EST SQA-270	07
⊖	Dust Smoke Detector	EST-SD SQA-50	06
⊗	Remote LED	EST SQA-LED 06	
⊕	135° Fixed Temp. Heat	EST SQA-HFS 03	
⊕	Synchronized Multi-Criteria Horn/Stroke	EST G1HR-HDM 10	
⊕	Synchronized Multi-Criteria Stroke Unit	EST G1SR-AM 06	
⊕	Fire Alarm Control Panel	EST EST-SM4 01	
⊕	Fire Alarm Remote Annunciator	EST EST-SM4 01	
⊕	Fire Alarm Booster Power Supply	EST BRP10A 01	
⊕	Control Module	EST SQA-CR 00	
⊕	Dual Input Monitor Module	EST SQA-C12 00	
⊕	Single Input Monitor Module	EST SQA-C11 00	
⊕	Water Tamper Switch, (F.B.O.)	N/A	
⊕	Water Flow Switch, (F.B.O.)	N/A	
⊕	Fan Starter Connection	N/A	
⊕	End Of Line Resistor	N/A	
⊕	Synchronized/Control Module	N/A	06
⊕	EST GCF-HDMH		

SYMBOLS OF OPERATION

- The addition of any MANUAL PULL STATION, AREA SMOKE DETECTOR, DUST SMOKE DETECTOR, OR SMOKEWELL FLOW SWITCH shall cause the following to occur:
- Light on individual alarm light as well as an audible signal at the fire alarm control panel and display the device in alarm on the 80 character LCD.
- Activate all alarm horns to ring a TEMPORAL CODE with the SIGNAL SILENCE SWITCH has been activated.
- Activate all alarm strobes until the system has been reset.
- Shut down all air handling units via a V/C control of the FAIR reset the act of pushing the "Fire Reset" button LOCATED ADJACENT TO THE F.A.C.P., shall start the tone.
- Light on individual alarm light as well as an audible signal at the REMOTE CONTROL PANEL and display the device in alarm on the 80 character LCD.
- Intermittent alarm and trouble to WALL SYSTEM.



ADJACENT TENANT

ARCHITECT/ENGINEER'S STAMP AREA

Confidential New York Fire Detection Information
PORT WASHINGTON, N.Y. 11050

NEW YORK FIRE DETECTION
1230 PORT WASHINGTON BLVD.
PORT WASHINGTON, N.Y. 11050
(516) 883-3900